



Semester One Examination, 2019

Question/Answer booklet

**MATHEMATICS  
METHODS  
UNIT 3**

**Section One:  
Calculator-free**

If required by your examination administrator, please  
place your student identification label in this box

Student number: In figures

--	--	--	--	--	--	--	--

In words

---

Your name

---

**Time allowed for this section**

Reading time before commencing work: five minutes

Working time: fifty minutes

**Materials required/recommended for this section**

***To be provided by the supervisor***

This Question/Answer booklet

Formula sheet

***To be provided by the candidate***

Standard items: pens (blue/black preferred), pencils (including coloured), sharpener,  
correction fluid/tape, eraser, ruler, highlighters

Special items: nil

**Important note to candidates**

No other items may be taken into the examination room. It is **your** responsibility to ensure that you do not have any unauthorised material. If you have any unauthorised material with you, hand it to the supervisor **before** reading any further.

## Structure of this paper

Section	Number of questions available	Number of questions to be answered	Working time (minutes)	Marks available	Percentage of examination
Section One: Calculator-free	8	8	50	54	35
Section Two: Calculator-assumed	13	13	100	98	65
<b>Total</b>					100

## Instructions to candidates

1. The rules for the conduct of Trinity College examinations are detailed in the *Instructions to Candidates* distributed to students prior to the examinations. Sitting this examination implies that you agree to abide by these rules.
2. Write your answers in this Question/Answer booklet preferably using a blue/black pen. Do not use erasable or gel pens.
3. You must be careful to confine your answer to the specific question asked and to follow any instructions that are specified to a particular question.
4. Show all your working clearly. Your working should be in sufficient detail to allow your answers to be checked readily and for marks to be awarded for reasoning. Incorrect answers given without supporting reasoning cannot be allocated any marks. For any question or part question worth more than two marks, valid working or justification is required to receive full marks. If you repeat any question, ensure that you cancel the answer you do not wish to have marked.
5. It is recommended that you do not use pencil, except in diagrams.
6. Supplementary pages for planning/continuing your answers to questions are provided at the end of this Question/Answer booklet. If you use these pages to continue an answer, indicate at the original answer where the answer is continued, i.e. give the page number.
7. The Formula sheet is not to be handed in with your Question/Answer booklet.

Section One: Calculator-free

35% (54 Marks)

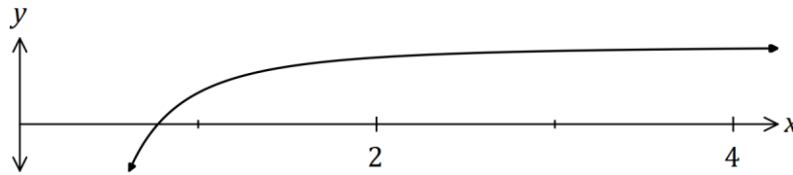
This section has **eight (8)** questions. Answer **all** questions. Write your answers in the spaces provided.

Working time: 50 minutes.

Question 1

(6 marks)

The curve shown below passes through the point  $(1, 4)$  and is such that  $\frac{dy}{dx} = \frac{12}{x^3}$ .



- (a) Show the equation of the curve is given by  $y = -\frac{6}{x^2} + 10$ . (3 marks)

- (b) Determine the area of the region enclosed by the curve, the  $x$ -axis, the line  $x = 1$  and the line  $x = 3$ . (3 marks)

Question 2

(7 marks)

(a) Determine

(i)  $\frac{d}{dx} \left( \frac{e^{6x}}{\sin(-3x)} \right).$

Do not simplify

(3 marks)

(ii)  $\frac{d}{dt} \int_t^3 (5\theta - 2)^6 d\theta.$

(2 marks)

(b) Simplify the indefinite integral  $\int (2x - 7)^4 dx.$

(2 marks)

**Question 3**

**(6 marks)**

Let  $f(x) = 5x + \frac{k}{2x}$ ,  $x < 0$  and  $k$  is a constant. The graph of  $y = f(x)$  has a stationary point when  $x = -3$ .

(a) Determine the value of  $k$ .

**(3 marks)**

(b) Use the second derivative test to determine the nature of the stationary point. **(3 marks)**

**Question 4**

**(7 marks)**

A farmer keeps a brood of  $n$  hens that can each lay up to one egg per day. On any given day, the probability that a hen lays an egg is independent with a constant value of  $p$ .

The discrete random variable  $X$  is the number of eggs laid by the brood in one day and  $X$  has a mean of 3.2 and standard deviation of 1.6.

(a) State the name given to this type of probability distribution and briefly explain why it is discrete. (2 marks)

(b) Determine the value of  $n$  and the value of  $p$ . (3 marks)

(c) Determine the mean and standard deviation of the distribution  $Y$ , where  $Y = 5X - 3$ . (2 marks)

**Question 5**

**(7 marks)**

A curve has equation  $y = 3xe^{4nx}$ , where  $n$  is a positive constant.

(a) Determine, in terms of  $n$ , the coordinates of the stationary point of the curve. (4 marks)

(b) Determine the coordinates of the point of inflection of the curve when  $n = \frac{1}{8}$ . (3 marks)

**Question 6**

**(7 marks)**

A vehicle travelling in a straight line has a velocity of  $24 \text{ ms}^{-1}$  as it leaves point  $A$ . The acceleration of the vehicle is given by  $2 - 2t \text{ ms}^{-2}$ , where  $t$  is the time in seconds since the vehicle left  $A$ .

(a) Determine the velocity of the vehicle when  $t = 1$ .

**(3 marks)**

(b) Determine the displacement equation

**(2 marks)**

(c) Determine how far from  $A$  the vehicle first comes to rest for  $t > 0$ .

**(2 marks)**



**Question 7**

**(7 marks)**

A calculator program will generate a single random integer  $n$ , where  $2 \leq n \leq 11$ . The program is run once, and the random variable  $X$  is the number of integers less than 10 obtained.

(a) Explain why  $X$  is a Bernoulli random variable. (1 mark)

(b) Determine  $P(X = 1)$ . (1 mark)

(c) Determine the mean and standard deviation of  $X$ . (2 marks)

The random variable  $Y$  is the number of integers less than 10 obtained in three consecutive runs of the program.

(d) Determine  $P(Y \leq 1)$ . (3 marks)

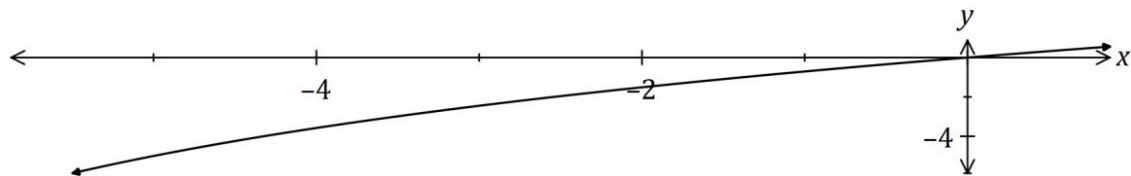
Question 8

(7 marks)

(a) Determine  $\frac{d}{dx}(4x\sqrt{x+9})$ .

(2 marks)

(b) Part of the graph of  $y = \frac{2x}{\sqrt{x+9}}$  is shown below.



Using your answer from part (a) or otherwise, determine  $\int_{-5}^0 \frac{2x}{\sqrt{x+9}} dx$ . (5 marks)



Supplementary page

Question number: \_\_\_\_\_

